

# Pass4Sures

Pass4sures

> Contact Us

👤 Login / Register

Search...



🏠 HOME

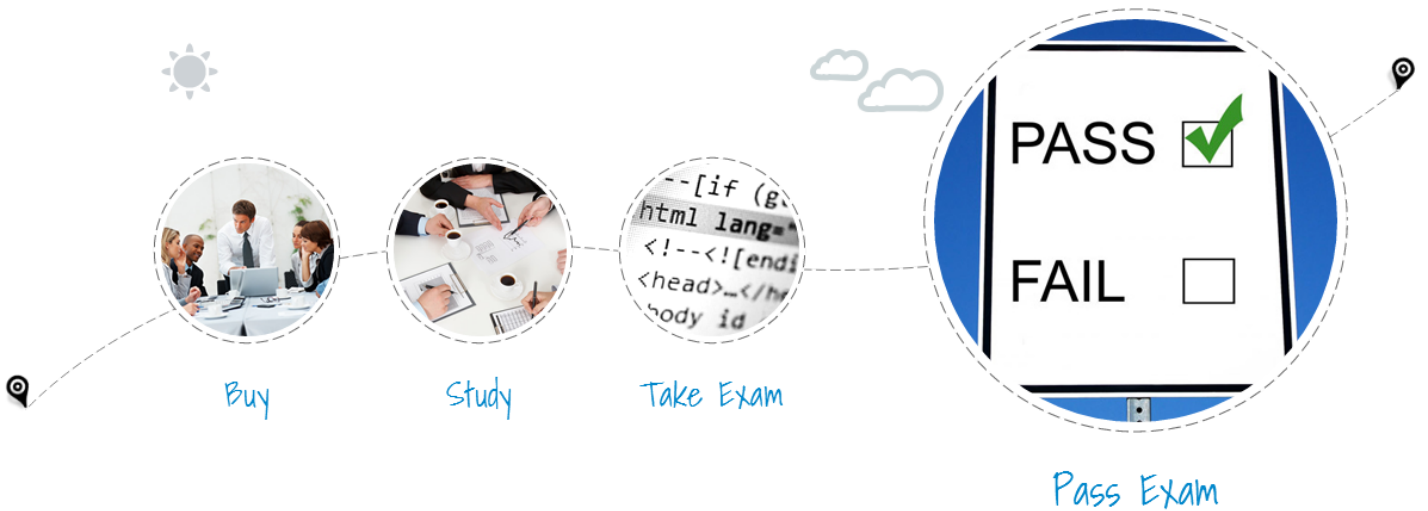
☰ ALL VENDORS

★ GUARANTEE

? FAQ

💬 TESTIMONIALS

🛒 CART (1)



Try **PDF Demo** before you buy

We're not the only ones **happy** about Pass4sures Practice Material ...

**49562+** customers in 100+ countries use Pass4sures Test Engine. Meet our customers.

🏢 iCompany

🕒 Paradoxx

💬 iMessenger

🏭 VOREED

✂️ GetCustom

🔥 JET ORANGE



<http://www.pass4sures.top/>

Latest Exam Guide & Learning Materials

**Exam** : **VCP550PSE**

**Title** : VMware Certified Professional  
- Data Center Virtualization  
(PSE)

**Vendor** : VMware

**Version** : DEMO

NO.1 A vSphere administrator needs to add more space to an existing 3-node Virtual SAN cluster. The attempts to add the new host to the cluster as a contributing member have failed. However, it can be added as a non-contributing member.

The host was previously used in a single host configuration. The administrator recently upgraded the host from ESXi 5.1 to 5.5 prior to adding it to the cluster.

What is the reason for this failure?

- A. The only SSD disk in the new host was formatted with a VMFS datastore.
- B. The new host has a 10Gbps NIC while the rest of the cluster members have 1Gbps NICs.
- C. The RAID controller in the new host does not have enough cache for the Virtual SAN datastore.
- D. The new host's VMFS datastores do not have sufficient capacity to be added as a contributing member.

**Answer: A**

NO.2 During the installation of ESXi, a vmkernel interface can be configured with what capabilities?

- A. Management traffic
- B. Management traffic and vMotion
- C. Management traffic, vMotion and Fault Tolerance logging
- D. Management traffic, vMotion, Fault Tolerance logging and IP storage

**Answer: A**

NO.3 A vSphere administrator needs to enable Distributed Resource Scheduling (DRS) in an existing vSphere environment:

The environment contains a High Availability (HA) cluster with eight ESXi hosts.

Six ESXi hosts are not in a cluster.

DRS should be used on as many hosts as possible.

Initial placement of virtual machines should be automatically performed.

Migration recommendations should be provided, but not performed without approval.

Which procedure should the administrator perform to accomplish this task?

- A. Select the datacenter and create a DRS cluster. Add the six remaining hosts to this cluster, then enable DRS. Edit the DRS settings and change the automation level to Partial.
- B. Select the existing HA cluster. Add the six remaining hosts to the cluster. Enable DRS, then edit the settings and change the automation level to Manual.
- C. Select the datacenter and create a DRS cluster. Add the six remaining hosts to this cluster, then enable DRS. Edit the DRS settings and change the automation level to Manual.
- D. Select the existing HA cluster. Add the six remaining hosts to the cluster. Enable DRS, then edit the settings and change the automation level to Partial.

**Answer: D**

NO.4 An administrator needs to implement trusted SSL certificates for all vCenter 5.5 components.

Which component needs an SSL certificate?

- A. Update Manager
- B. Auto Deploy

- C. ESXi Dump Collector
- D. Network Syslog Collector

**Answer: A**

NO.5 A vSphere administrator has created a vSphere Standard Switch with one virtual machine port group and one physical uplink. The administrator needs to ensure that the virtual machines on this port group can communicate only with each other.

What should the administrator do?

- A. Remove the physical uplink from the vSphere Standard Switch
- B. Create a Private VLAN and apply it to the virtual machine port group on the vSphere Standard Switch
- C. Enable Port Security on the vSphere Standard Switch
- D. Enable the Fenced setting on the virtual machine port group

**Answer: A**

NO.6 To comply with security requirements, an administrator with a vCenter Server Appliance needs to force logoff of the vSphere web client after 10 minutes of inactivity.

What should the administrator do to meet the requirement?

- A. Edit: /var/lib/vmware/vsphere-client/webclient.properties, modify session.timeout=10
- B. Edit: /opt/vmware/vsphere-client/webclient.properties, modify session.timeout=600
- C. Edit: /var/lib/vmware/vsphere-client/webclient.properties modify session.timeout=600
- D. Edit: /opt/vmware/vsphere-client/webclient.properties, modify session.timeout=10

**Answer: A**

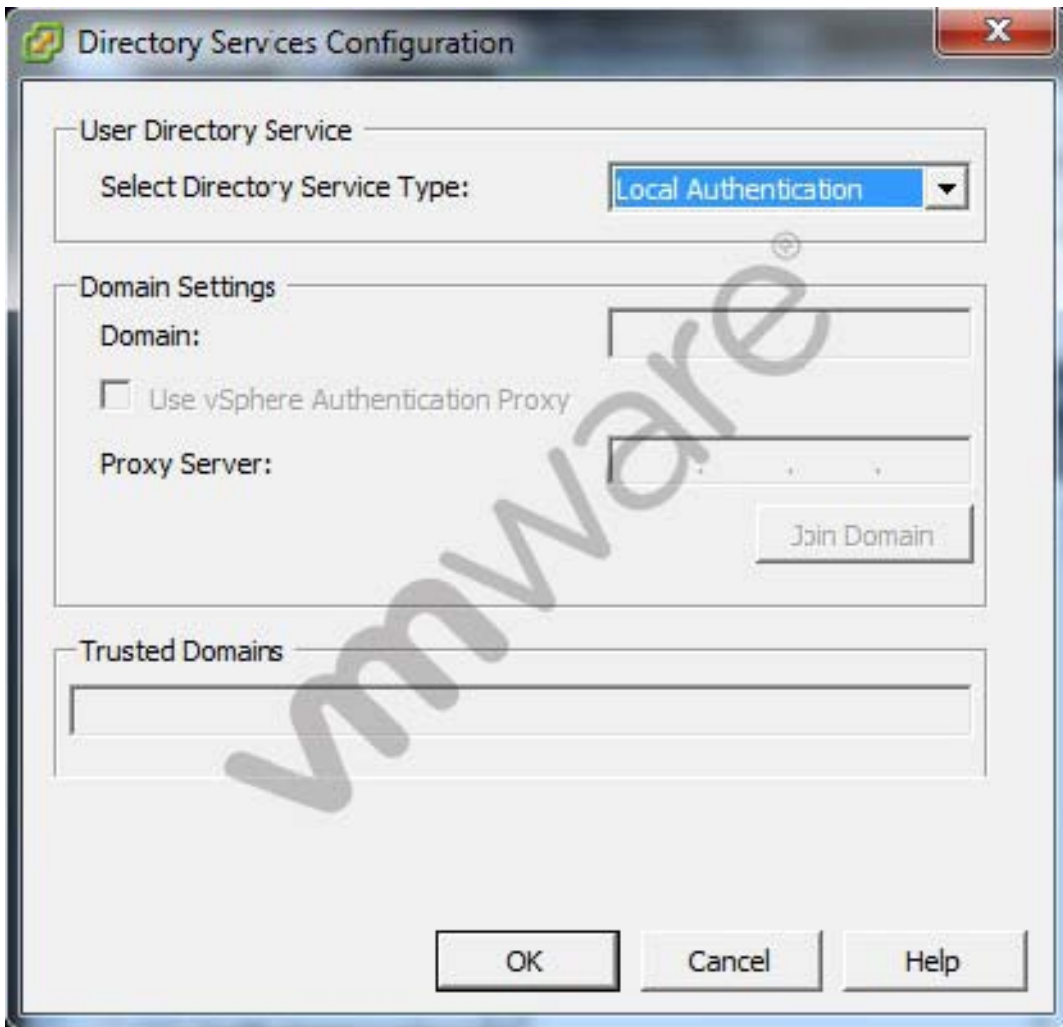
NO.7 Which action should an administrator take to increase the size of a VMFS5 datastore from 2TB to 32TB?

- A. Dynamically expand the original LUN and add a second share for the NFS datastore
- B. Dynamically expand the original LUN and increase the size of the VMFS datastore
- C. Dynamically expand the original LUN and add extents to the VMFS datastore
- D. Dynamically expand the original LUN and add extents to the NFS datastore

**Answer: B**

NO.8 The vSphere administrator is configuring directory services for an ESXi host:

-- Exhibit -



-- Exhibit -

What should the vSphere administrator do to configure the host to use CAM services?

- A. Check the Use vSphere Authentication Proxy checkbox.
- B. Set Select Directory Service Type to CAM services.
- C. Specify CAM\$ for the Domain.
- D. Set Trusted Domains to cam\name.tld where name.tld is the domain that the host is joining.

**Answer: A**

NO.9 The vSphere administrator needs to migrate a virtual machine from one ESXi 5.5 host to another ESXi 5.5 host. The virtual machine has a virtual disk that is stored in local storage.

Assuming only the vSphere Essentials licensing is in place, which technique should the administrator use to accomplish the migration?

- A. vMotion migration
- B. Cold migration
- C. Enhanced vMotion migration
- D. Storage vMotion migration

**Answer: B**

NO.10 A vSphere administrator needs to use vSphere Update Manager to perform orchestrated upgrades of virtual machines.

Which two options are available for virtual machine remediation? (Choose two.)

- A. Upgrade virtual machine hardware
- B. Upgrade VMware tools
- C. Upgrade virtual machine appliances
- D. Upgrade virtual machine guest OS

**Answer:** A,B

NO.11 An administrator using vCenter Operations Manager notices an increase in resource consumption by virtual machines over a period of time. The administrator needs to understand how adding more hosts or increasing resources in existing hosts will address the growing resource requirements of the virtual machines.

Which vCenter Operations Manager feature can provide this information?

- A. Host or Cluster Capacity Optimization Report
- B. What-if Scenarios
- C. Density and Reclaimable Waste badges
- D. Virtual Machine Optimization Report

**Answer:** B

NO.12 How should a vSphere administrator disable memory compression?

- A. Attach a vSphere Client to an ESXi host and edit the Mem.MemZipEnable advanced setting.
- B. Connect to vCenter Server using the vSphere Client and edit the virtual machine. Insert the Mem.MemZipDisable option and set the value to True.
- C. Connect a vSphere Client to vCenter Server and configure the Memory Compression setting from the Administration menu.
- D. Reboot the ESXi host and disable memory compression in the BIOS under Advanced Settings.

**Answer:** A

NO.13 Which controller is recommended for high disk I/O workloads?

- A. BusLogic Parallel
- B. LSI Logic Parallel
- C. LSI Logic SAS
- D. VMware Paravirtual

**Answer:** D

NO.14 A vSphere administrator needs a way of sending noncritical ESXi events to a remote server. Due to budget constraints, no additional costs should be incurred.

Which tool will best meet this requirement?

- A. vSphere Syslog Collector
- B. vSphere ESXi Dump Collector
- C. vSphere vCenter Log Insight
- D. vSphere Management Appliance

**Answer:** A

NO.15 An administrator has created a Virtual SAN Cluster using Automatic Mode Disk Groups. There is very little storage space left in the cluster. The administrator has access to an iSCSI storage array. Which approach should the administrator take to expand the Virtual SAN Cluster?

- A. Add new hosts to the cluster with available local disks then click the Claim Disks icon in the Disk Management section under the Virtual SAN tab.
- B. Add new disks to the hosts in the cluster then click the Claim Disks icon in the Disk Management section under the Virtual SAN tab.
- C. Add new hosts to the cluster with available local disk. No further action is required to claim the added storage.
- D. Provision new LUNs on the iSCSI storage and present one LUN to each host in the cluster. No further action is required to claim the added storage.

**Answer:** C

NO.16 The vSphere administrator needs to migrate a virtual machine from one host to another. The virtual machine .vswp file resides in local storage.

Which two techniques can the administrator use to migrate the virtual machine? (Choose two.)

- A. vMotion migration
- B. Cold migration
- C. Storage vMotion migration
- D. Enhanced vMotion migration

**Answer:** A,B